



WORLD TOUR  
2019

# Level 4

## Sharing Your Data



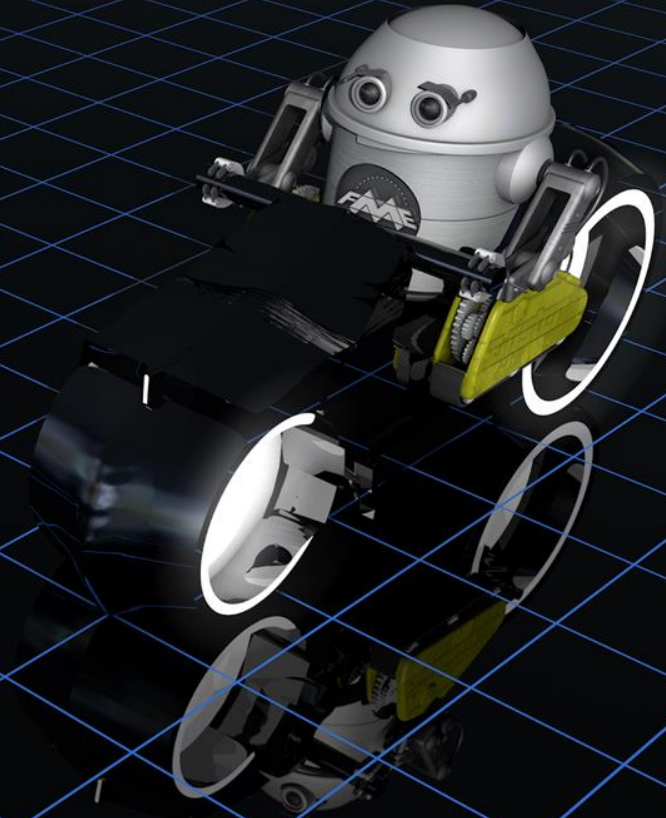
# AGENDA

- |   |                               |  |
|---|-------------------------------|--|
| 1 | Key challenges                |  |
| 2 | Sharing from a complex format |  |
| 3 | Sharing complex data          |  |
|   |                               |  |
|   |                               |  |
|   |                               |  |
|   |                               |  |

START

# Key Challenge

Sharing complex data with anyone, including non-technical end users.



# Two Main Issues

1. Data is in a format or system that users can't easily **access**.
2. Data is too **complex** and hard to understand.

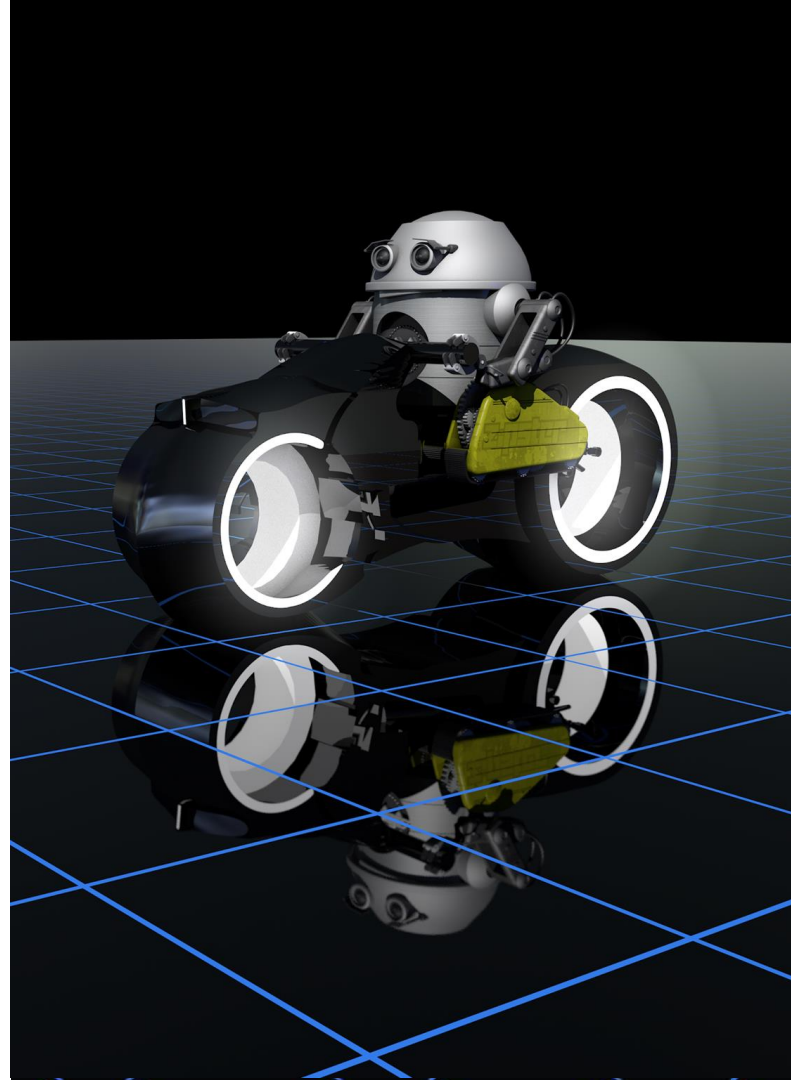
# Problem: Sharing data that's not easy to access

- Not everyone has the tools to access data at the source.
- Expert knowledge required to navigate some systems.



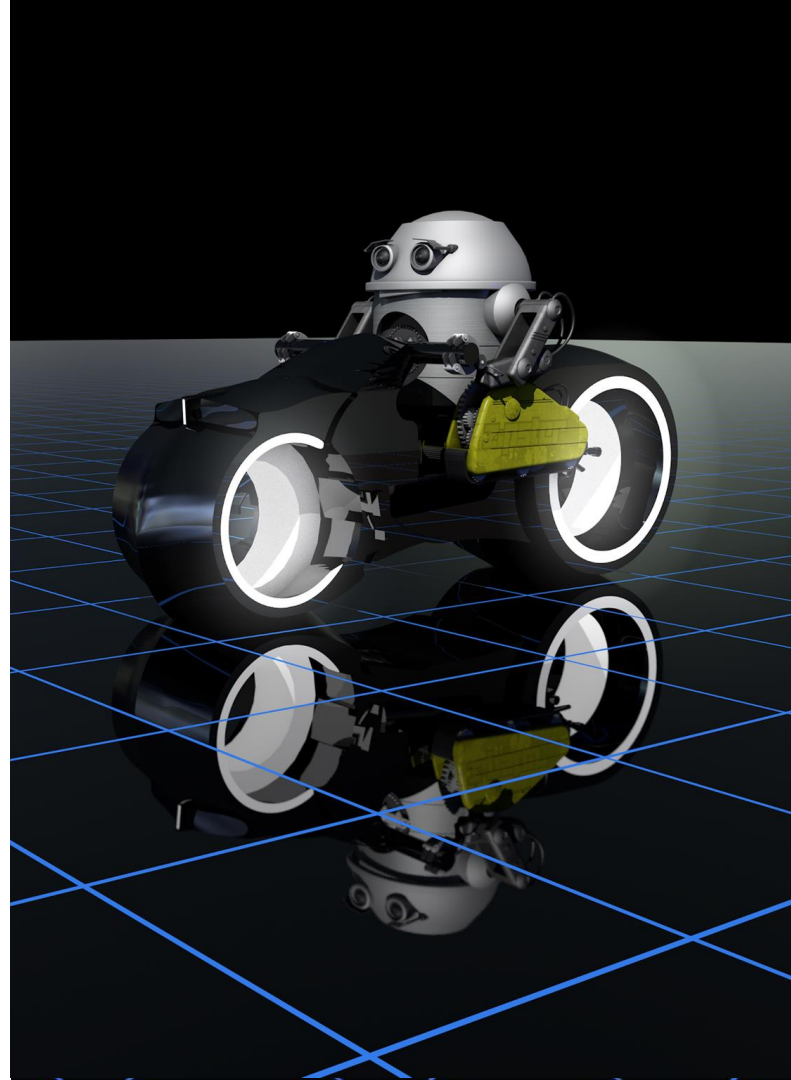
# Solution: Friendly Formats

- PDF
- Microsoft Word, Excel, PowerPoint
- Web browser visualizations, e.g. Cesium
- HTML page (including web maps)
- Augmented reality on mobile device
- Make a game!



# Steps

- **Integrate** data from various systems
  - CAD, GIS, Tabular, 3D ...
  - Take advantage of the strengths of these ways to store data.
- **Convert** data to a friendly format
  - Let the user work with the data they need with the tools they have.









1x  
Jul 7 2018  
22:40:38 UTC

**CESIUM** DataLandscape

Jul 7 2018 04:00:00 UTC

Jul 7 2018 08:00:00 UTC

Jul 7 2018 12:00:00 UTC

Jul 7 2018 16:00:00 UTC

Jul 7 2018 20:00:00 UTC

Jul 8 2018 00:00:00 UTC

# MapnikRasterizer



PowerPoint File Edit View Insert Format Arrange Tools Slide Show Window Help

first.pptx

Home Font Themes Tables Charts SmartArt Transitions Animations Slide Show Review

210%

Search in Presentation

Insert Tools

Font Tools

Arrange

Size

Height: 5.1 cm

Width: 2.9 cm

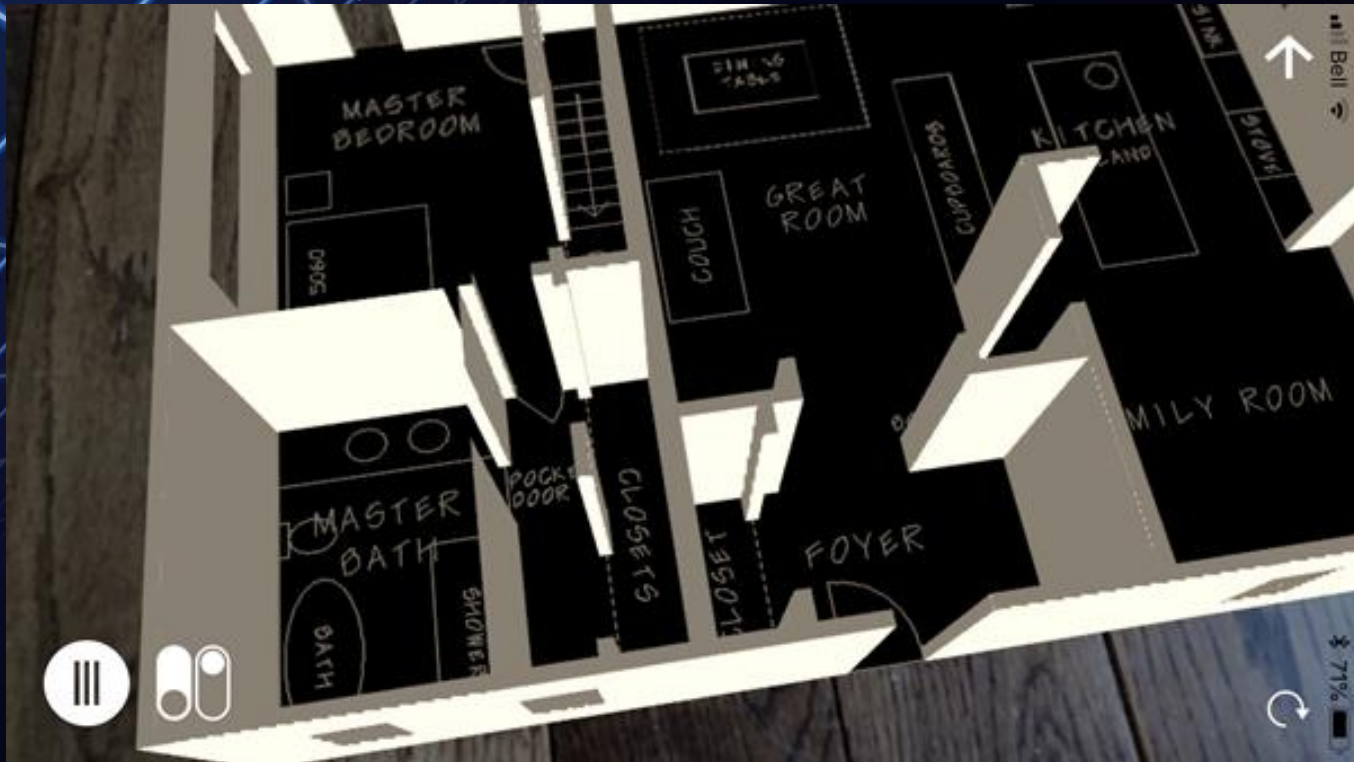
Outline

Canada

# Canada

Click to add notes

Slide 1 of 1 210%



Bell

71%



# Final step: Automation

Make sure the data you're sharing is always up to date.

Run your conversion workflows on a schedule or whenever new data arrives.

# Tips for Sharing Complex Data

- Create **interactive** reports to engage users more than a traditional report would.
- Incorporate a **variety** of data sources to enrich the data.
- Build a **self-serve web portal** so users can get the data they want on demand.



# Example: Generating Interactive Reports

Letting end users generate interactive reports on demand (via FME Server).

Repository:

Workspace:

Service:

Published Parameters

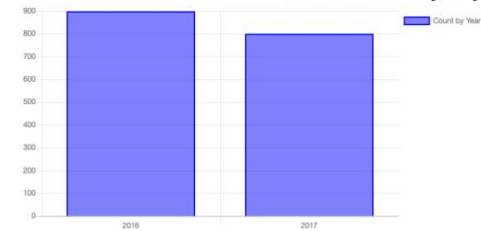
Choose a Station

- 29th Avenue Station
- Broadway-City Hall Station**
- Burrard Station
- Commercial-Broadway Station
- Granville Station
- Joyce-Collingwood Station
- King Edward Station
- ... 49th Avenue Station

Advanced



Crimes within 500m of Broadway-City Hall Station



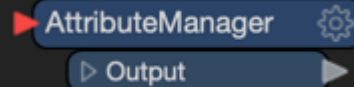
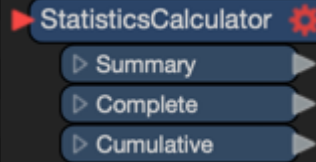
There is a 11% decrease in crimes around Broadway-City Hall Station between 2016 and 2017

# Key Transformers



Creates web reports, with maps and graphs. No coding required!

Calculates the statistics so you don't have to.

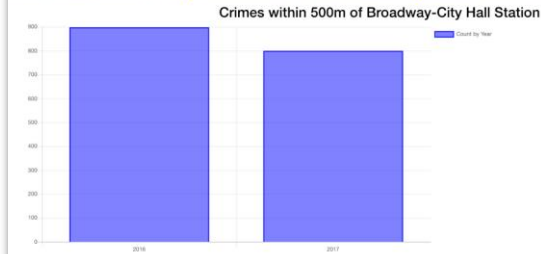


Sets conditional values for attributes based on the statistics gathered

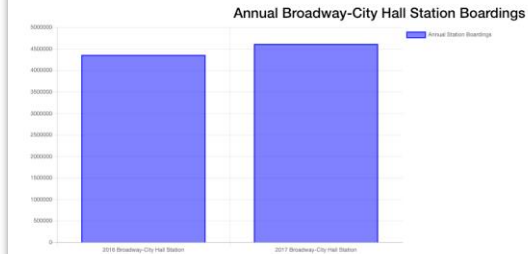




# Demo



There is a 11% decrease in crimes around Broadway City Hall Station between 2016 and 2017



There was a 5% increase of boardings between 2016-2017 at Broadway City Hall Station



**FME Data Download Service Completed Successfully**

Please click the following link to download the result of your transformation

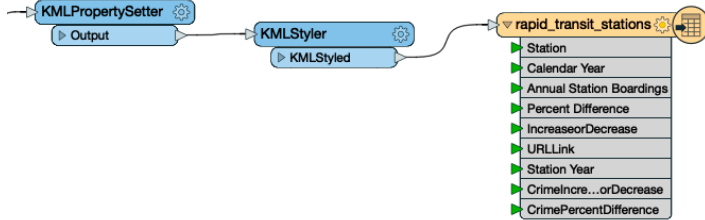
[https://fmewt2019-safe-software.fmecloud.com:443/fmedatadownload/results/FME\\_51292C70\\_1548896981683\\_6313.zip](https://fmewt2019-safe-software.fmecloud.com:443/fmedatadownload/results/FME_51292C70_1548896981683_6313.zip)



Want the raw data? [Click Here](#) to download it.

# Example: Creating a Custom Application

Building a custom web interface to display data (via FME Server).

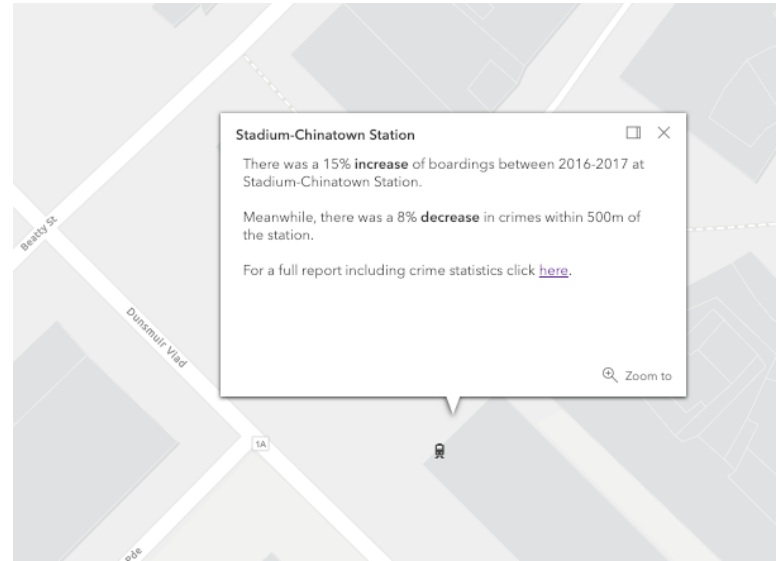


Text Editor - 'Content'

There was a @Value(Percent Difference)% <b>@Value(IncreaseorDecrease)</b> of boardings between 2016-2017 at @Value(Station).

Meanwhile, there was a @abs(@Value(CrimePercentDifference))% <b>@Value(CrimeIncreaseorDecrease)</b> in crimes within 500m of the station.

For a full report including crime statistics click <a href="https://bluesky-safe-software.fmecloud.com/fmedatastreaming/Sienna/TranslinkReport.fmw?Station=@Value(URLLink)&2016File=%24(FME\_SHAREDRESOURCE\_DATA)%2FSienna%2FCrime%2F2016Crimes.csv&2017file=%24(FME\_SHAREDRESOURCE\_DATA)%2FSienna%2FCrime%2F2017Crimes.csv" target="\_blank">here</a>.



# Key Transformers

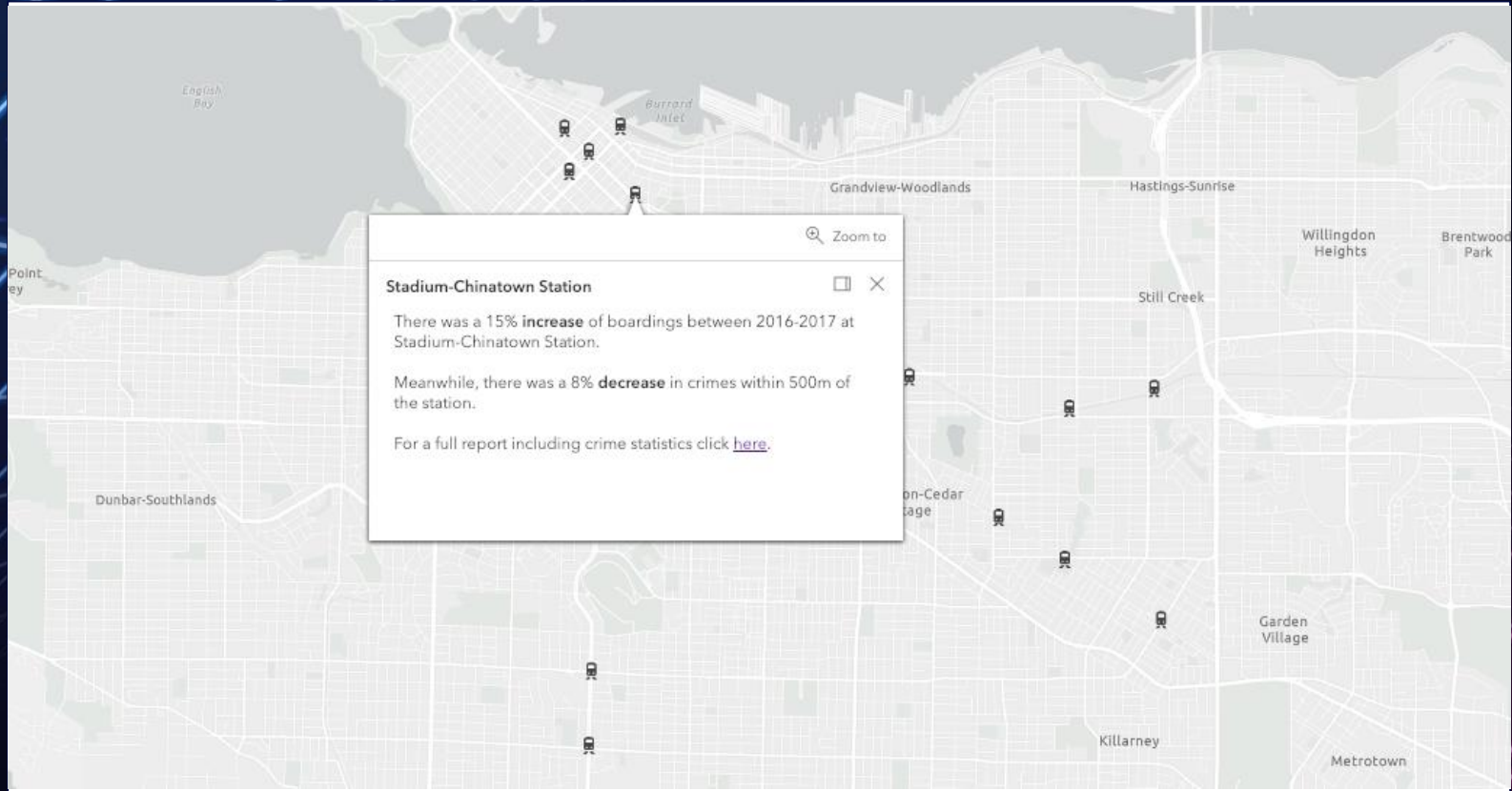


Sets the information in the description balloon. Can include attributes from each location.

Used to join multiple datasets together



Live online! <http://demos.fmeserver.com/translinkreport/>





### TranslinkReport (5)

On My iPhone

+Tag



**AirDrop.** Share instantly with people nearby. If they turn on AirDrop from Control Center on iOS or from Finder on the Mac, you'll see their names here. Just tap to share.



Message



Mail



Chrome



Message



Copy



Save to Files



Quick Look



More

Cancel

# Learn More

- [Creating PDF Cartographic Output](#)
- [Visualizing Data in a Web Browser with Cesium Ion and FME](#)
- [Introduction to the MapnikRasterizer](#)
- [FME 2016.1 Use Case: HTML Reports for Data Validation](#)
- [Web Data and Reporting](#)





Questions?