

# Auditing FME Server and Esri Portal/ArcGIS Online utilising FME

Todd Davis



# PRESENTATION AGENDA

- |   |              |
|---|--------------|
| 1 | Background   |
| 2 | The Problem  |
| 3 | The Solution |
| 4 | What's Next  |
|   |              |
|   |              |
|   |              |

START

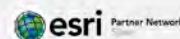
# What we do



- Abley is a specialist professional services company, long experienced in transportation planning and engineering, spatial and data intelligence
- Abley empower our clients to make effective decisions by providing clear and insightful advice
- Legacy of transportation and spatial capabilities
- And a Safe Software Partner



Partners

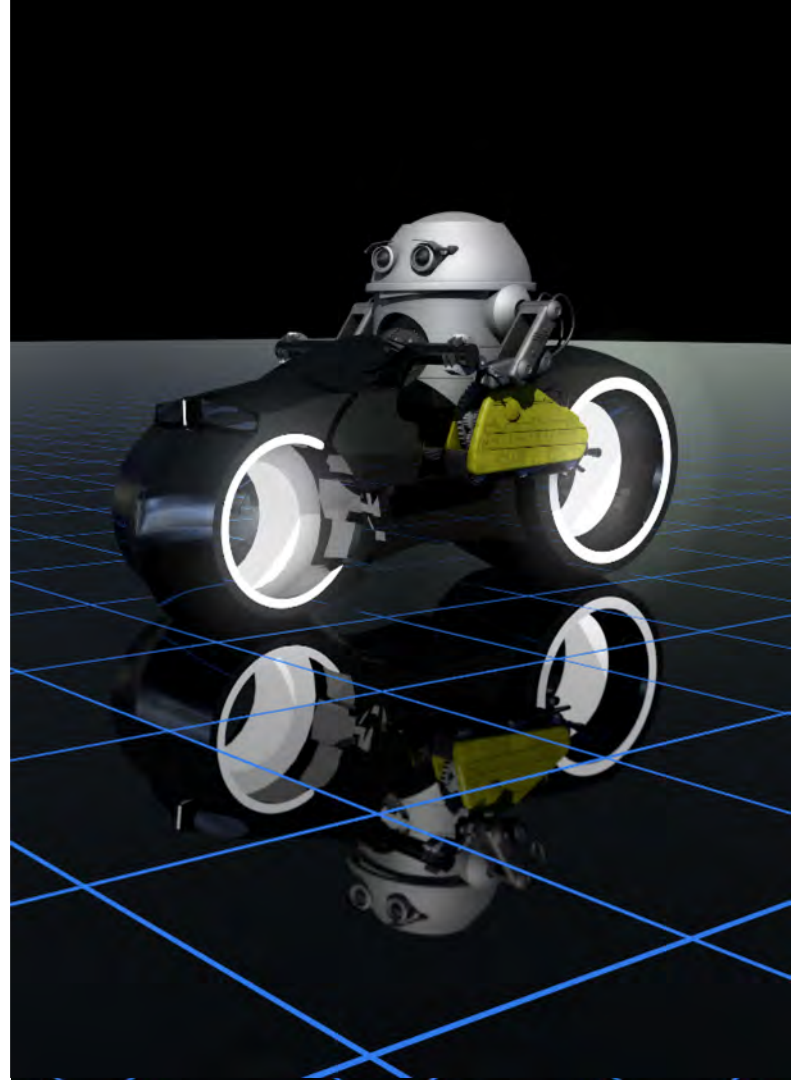


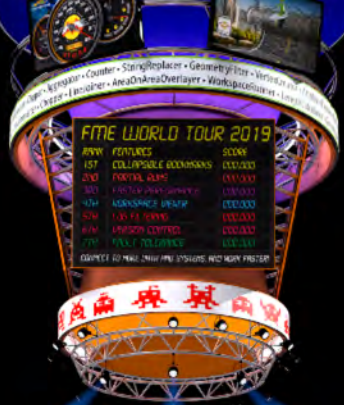
KNOWLEDGE CENTER



# Background

Today the likes of Esri ArcGIS Online/Portal and Safe FME Server empowers Users and Creators to develop, work in and distribute in a centralised environment.





# The Easy Answer

For the Administrator

DON'T GIVE PEOPLE RIGHTS TO DO THINGS

But negate the benefits that FME Server and the Esri Platform now offer for productivity increases

# But someone is still responsible....

The poor administrator often has the ultimate responsibility to make sure that:

- Things work
- Things are secure
- We can fix things when they go wrong
- Provide details to those above in the org




(Admin)

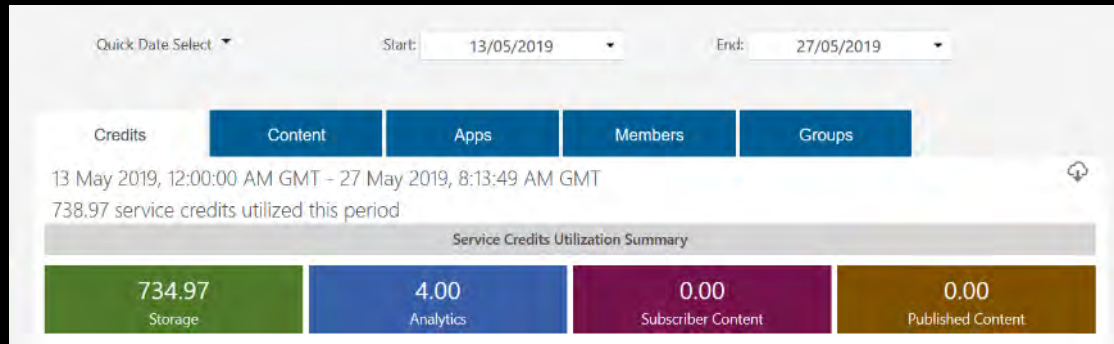




# The Problem

# Where are the tools to Audit the systems?

 Dashboards





# How do I?

Some of many, many things to confirm in FME Server

See when a workspace was last published and who published

That emails can be sent and received by the FME Server

Know what workspaces use which topic

Know which events triggers start what process

Make sure transformers inside workbenches don't use a users password

What python libraries are used by which workspaces

# How do I?

Now for ArcGIS Online/Portal

See if tags, metadata exist

Who has access to each item

Are all the webmaps linking to existing current data

Know when it was last viewed

Know who is viewing our data

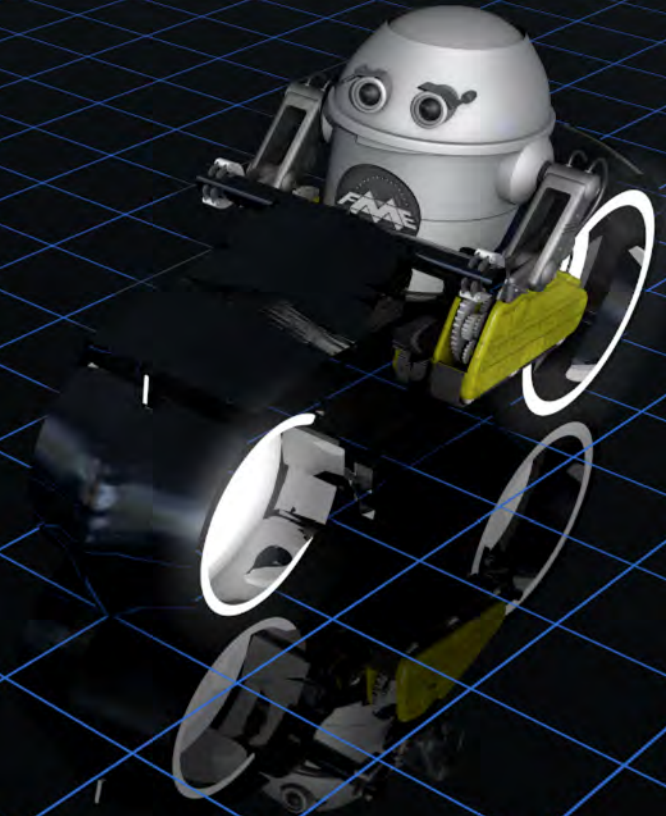
Know which groups don't have associated items

Who is using ArcGIS Pro and when

A stylized, futuristic cityscape at night. The buildings are rendered in a wireframe style with glowing blue and purple lines. The floor is a grid of glowing purple lines. The sky is dark blue with some stars. The text is centered in the middle of the image.

So how can we give users what they want, but make sure the environment is tidy and deal with possible risks

So we need a way of auditing the systems that Esri and Safe currently don't publicly have





# The Solution

# Both systems have wide ranging Rest API's

- FME Server runs most things via Rest API and what calls are listed are well documented (although many still aren't listed)
- Esri ArcGIS Online/Portal Rest api is complex but has lot of functions, even though many calls still aren't listed.

So the next question is how to work with the API calls and the resulting JSON???



# FME

Of Course

Were needed we can make custom transformer to perform specific functions

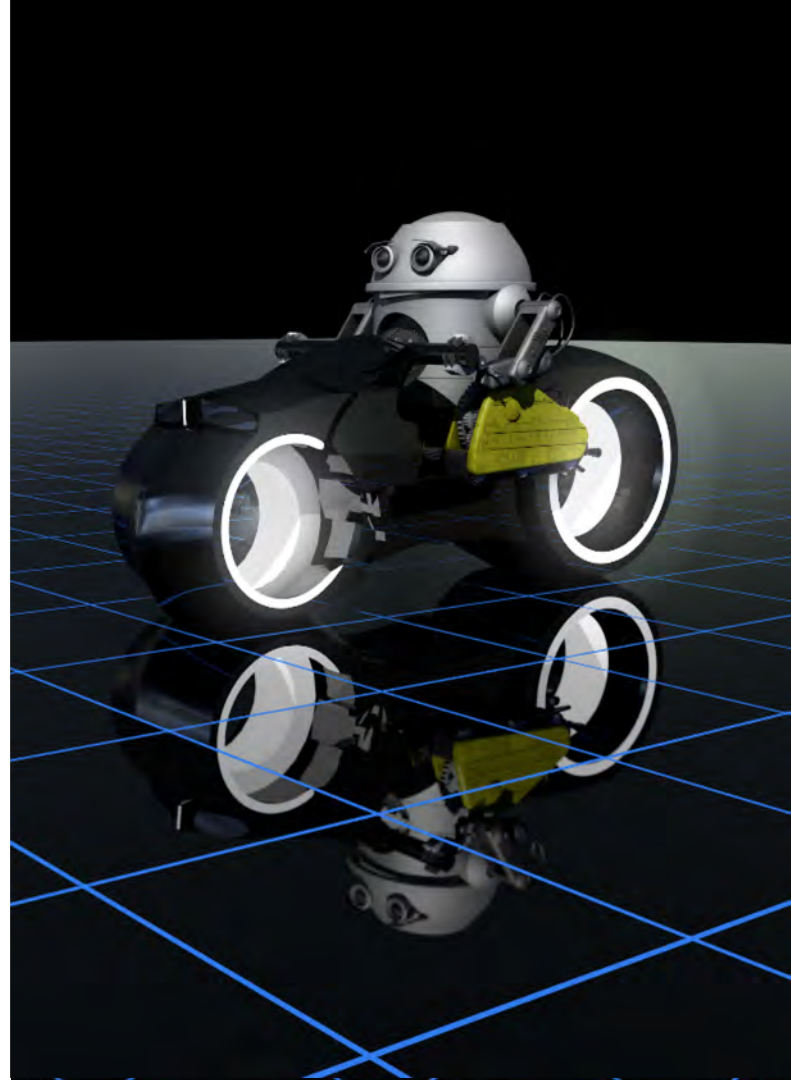
We can merge/join results to draw the conclusion we need to

We can setup repetition of the process in FME Server

And FME Server can provide the Dashboards that allow us to consume generalised data

# Audit FME Server

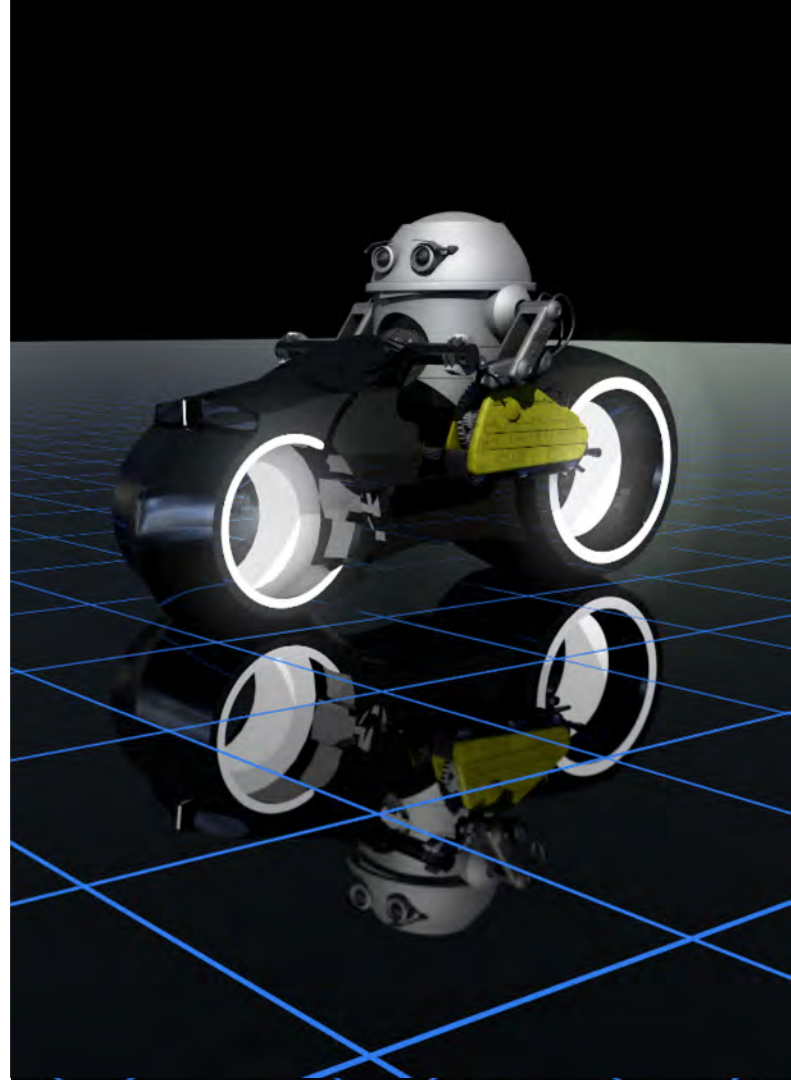
- Process set to run daily on FME Server
- Creates Dashboard and data
- Data can be interrogated to provide all sorts of detail
- Processes to confirm that FME Server is working correctly (send sms if finds issues)





# What do we have

- Workspaces with Python
- Python libraries used
- Workspaces associated to Topic
- Workspaces started by Publication
- Schedule
- Publishers and Subscribers
- Workspaces
- User (dashboard required)
- Roles (dashboard required)
- Connections (dashboard required)
- Security (dashboard required)
- Workspace last run (dashboard required)
- Publication and Subscriber validation
- Publish to Github
- Email send/receive confirmation
- etc



- ▶ Run Workspace
- ▶ Jobs
- ▶ Schedules
- ▶ Repositories
- ▶ Workspace Viewer
- ▶ Notifications
- ▶ Resources
- ▶ Connections
- ▶ Projects
- ▶ Dashboards
- ADMIN
- ▶ Engines & Licensing
- ▶ Security
- ▶ System Cleanup
- ▶ Backup & Restore
- ▶ System Configuration

Name: Workbenches that have Python

## Workbenches that have Python

Last run 15/05/2019

[Download as excel](#)

Repository	Workbench	Python Version
ContinuousVisibility	RoadView.fmw	27
ContinuousVisibility	RoadView_multiplinputs.fmw	27
Dashboards	FMEServer_Reporting.fmw	27
FHL-J037	DomainCreation.fmw	ArcGISPro21
FHL-J037	Schema_Robert_2.fmw	ArcGISDesktop
FHL-J037	Table Creation.fmw	ArcGISPro21
Hapal_Dev	session_Excel_To_DB_json_PROD.fmw	27
LDS	Cadastre_WFSDownload.fmw	27
Utilities	FMEServer_Reporting.fmw	27
Utilities	backupConfiguration.fmw	None
WFM	Dump_WFM.fmw	34

Offline

Name: Workspaces and associated Topics

## Workspaces and associated Topics

Last run 15/05/2019

[Download as excel](#)

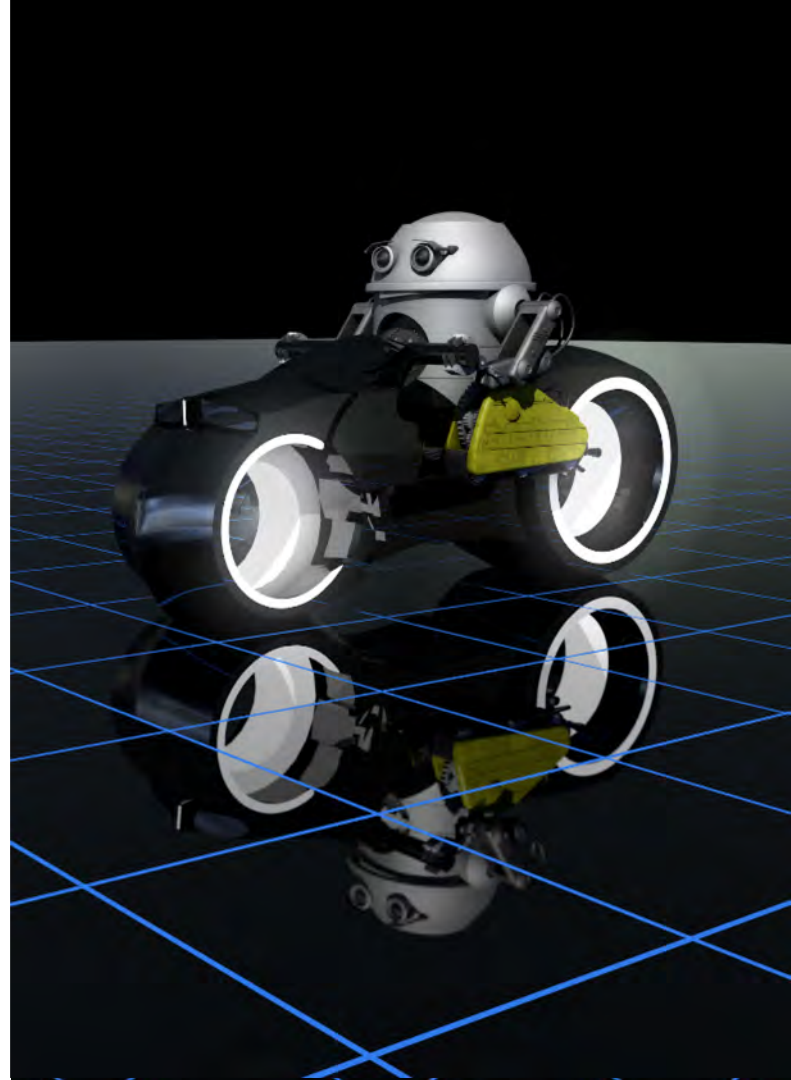
Repository	Workbench	Service	Topic Type	Topic
ArcGIS	MonitorArcGISUse.fmw	Schedule	FAILURE_TOPICS	SCHEDULE_FAILURE_EMAIL
CAD	MonitorCADUse.fmw	Schedule	FAILURE_TOPICS	SCHEDULE_FAILURE_EMAIL
Dashboards	Delete Repository Items.fmw	FMEServerNotifier Transformer	None	EMAIL_HTML
Dashboards	JobHistoryStatisticsGathering.fmw	Schedule	SUCCESS_TOPICS	GENERATE_DASHBOARD
LDS	Cadastrre_WFSDownload.fmw	fmejobsubmitter	SUCCESS_TOPICS	JOBSUBMITTER_ASYNC_JOB_SUCCESS
LDS	Cadastrre_WFSDownload.fmw	FMEServerNotifier Transformer	None	JOBSUBMITTER_ASYNC_JOB_SUCCESS
LDS	Cadastrre_WFSDownload.fmw	FMEServerNotifier Transformer	None	JOBSUBMITTER_ASYNC_JOB_SUCCESS
LDS	Cadastrre_WFSDownload.fmw	FMEServerNotifier Transformer	None	JOBSUBMITTER_ASYNC_JOB_SUCCESS
LDS	Cadastrre_WFSDownload.fmw	FMEServerNotifier Transformer	None	JOBSUBMITTER_ASYNC_JOB_SUCCESS
Utilities	VersionControl_push.fmw	FMEServerNotifier Transformer	None	JOBSUBMITTER_ASYNC_JOB_SUCCESS
Utilities	VersionControl_push.fmw	Schedule	FAILURE_TOPICS	SCHEDULE_FAILURE_EMAIL

- ▶ Run Workspace
- ▶ Jobs
- ▶ Schedules
- ▶ Repositories
- ▶ Workspace Viewer
- ▶ Notifications
- ▶ Resources
- ▶ Connections
- ▶ Projects
- ▶ **Dashboards**
- ADMIN
- ▶ Engines & Licensing
- ▶ Security
- ▶ System Cleanup
- ▶ Backup & Restore
- ▶ System Configuration

Offline

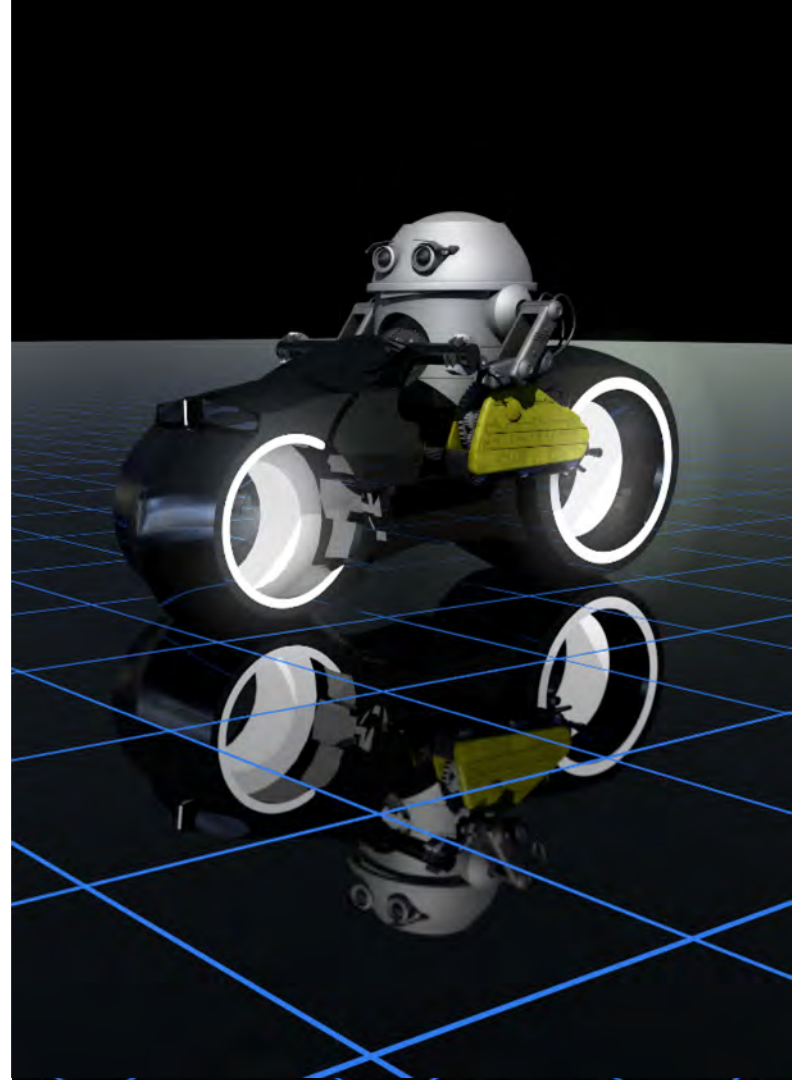
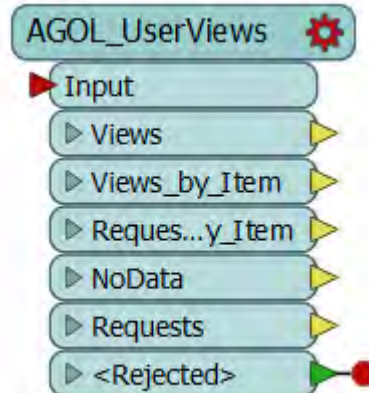
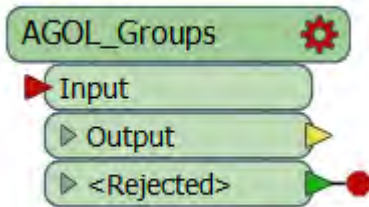
# Any issues

- JSON returned by FME Server is nested, with multiple arrays. This can be hard to break down and difficult to put into a 'table'
- Lots of calls aren't documented, so the "web developer" browser extensions come out
- Have looked at the 2019 automations calls, but decided not to implement just yet, as I expect the backend to change



# Audit Esri ArcGIS Online/Portal

- Currently continue to build custom transformers
- Developing processes to utilise these custom transformers to return specific outcomes



# What do we have

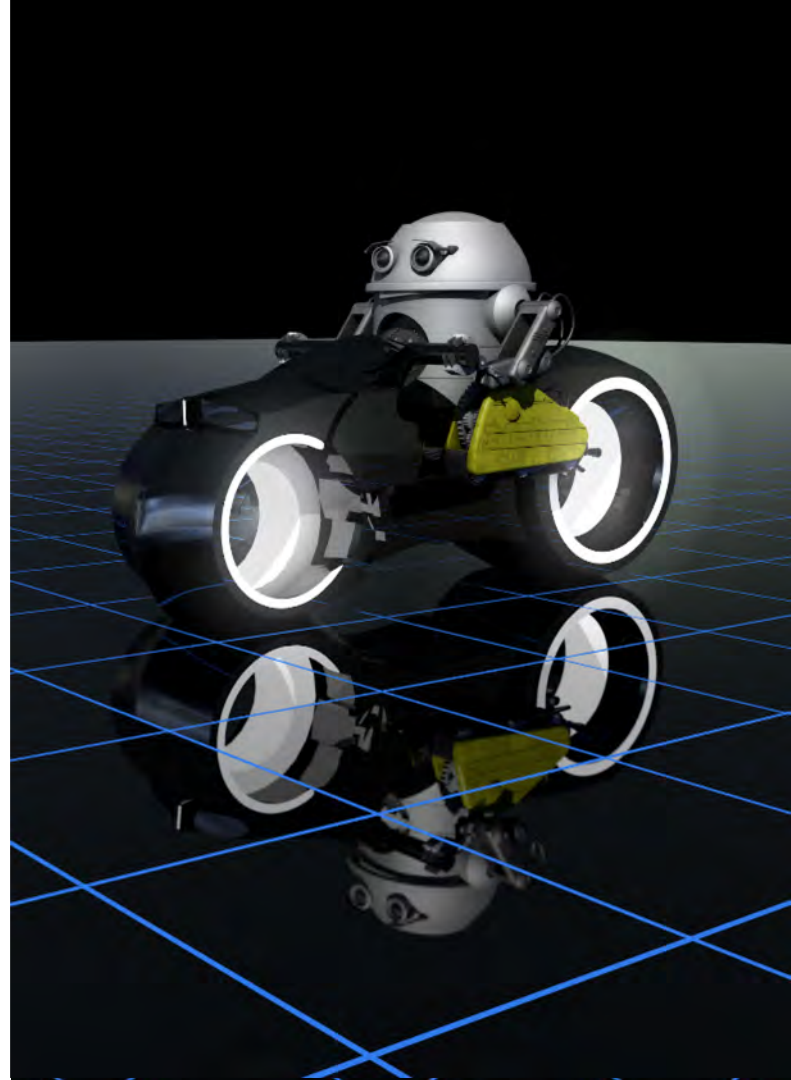
- Get all Items and associated data
- Get all Users from Org
- Get all groups from Org
- View and Requests against Org

Current processes to be made custom:

- Credit usage for users/functions in Org
- ArcGIS Pro license usage
- Confirming webmaps still link to live data

Others:

- Bulk edits of webmaps
- Archive/Restore of items
- And a bunch of ArcGIS Enterprise processes



# Who's viewing what items? (below is based on views over a month)

views	date	name	stype	username
2	20181001000000	4921b4fc41ad49568db3521b69a7711f	portal	elvin.infante_opus_NZTA
2	20181101000000	4921b4fc41ad49568db3521b69a7711f	portal	elvin.infante_opus_NZTA
9	20181001000000	8252835226ce4930a1a8bb4994316fcf	portal	elvin.infante_opus_NZTA
10	20181101000000	8252835226ce4930a1a8bb4994316fcf	portal	elvin.infante_opus_NZTA
2	20181001000000	b3655ebcca4c4093863d1934653cad25	portal	elvin.infante_opus_NZTA
2	20181101000000	b3655ebcca4c4093863d1934653cad25	portal	elvin.infante_opus_NZTA
2	20181001000000	bc858172b019440d971f0a5bfb473b28	portal	elvin.infante_opus_NZTA
2	20181101000000	bc858172b019440d971f0a5bfb473b28	portal	elvin.infante_opus_NZTA
2	20181001000000	cac672f08bab4e12a33868f4220b6733	portal	elvin.infante_opus_NZTA
2	20181101000000	cac672f08bab4e12a33868f4220b6733	portal	elvin.infante_opus_NZTA
1	20181001000000	91aa326f9655464cb50efe497a53908e	portal	emcalister_DOC
3	20181101000000	05fc8c3c0c6d4013b133cd1368d46b1e	portal	evan.willcocks_NZTA
3	20181101000000	8252835226ce4930a1a8bb4994316fcf	portal	evan.willcocks_NZTA
1	20181101000000	8b86444d4e13475ca382cc8dd449241b	portal	ewc_eaglelegis
1	20181101000000	a8d8fc65368846fca9e63edc894dd99a	portal	ewc_eaglelegis
1	20181101000000	cc0841977b6147cf956881e59000782e	portal	ewc_eaglelegis

## Or the size of data being stored in items

ItemContr	protect	tot	sharing	size
admin	FALSE		{"access":"org","groups":[]}	4022272000
admin	FALSE	15	{"access":"private","groups":[]}	2651253483
admin	FALSE	15	{"access":"private","groups":[]}	2651194263
admin	FALSE		{"access":"private","groups":[]}	1011075985

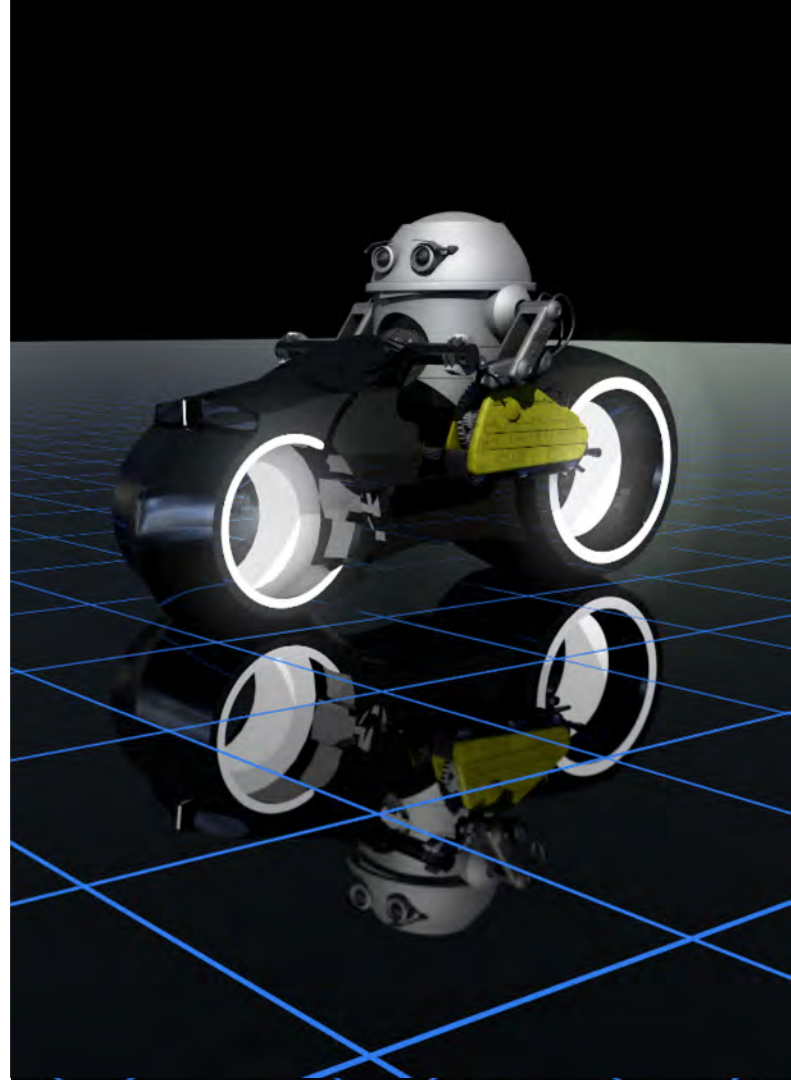
## And some of the poor metadata associated

scoreCompleteness	snippet
45	Demo test for nationwide NZTA accessibility maps

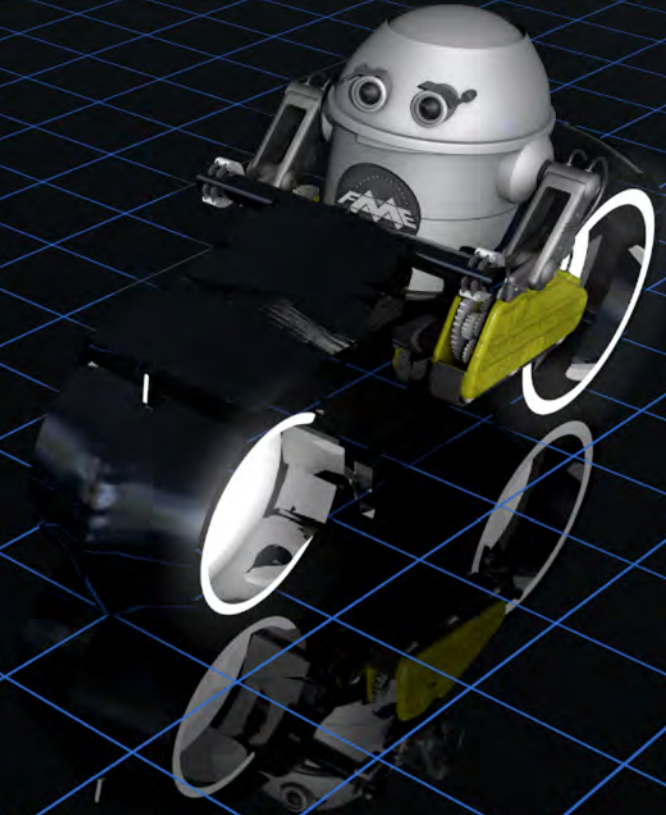


# Any Issues

- Esri has so many calls and a number return duplicated information
- Items relation to there organisation. Org → Item 😊, Item → Org ☹️
- While a another organisation can control a group that is linked to your org, you do not have permission to look at it.
- Each person has a “favourites” group, but this is not an group that is searchable at org level.
- No documentation for “usage” calls



Being oblivious of what is in your environment is easy; but there is significant value in knowing your environment



# What's next

- Keep building...
- Find out what others are doing in the AGOL monitoring space...talking to York Region in Canada, talking to Auckland City Council
- Keep pushing Safe for Auditing in FME Server...it is certainly on the list
- For Abley...roll out requirements, and then make sure they are adhered





**THANK YOU!**

Todd.davis@abley.com