



WORLD TOUR
2019

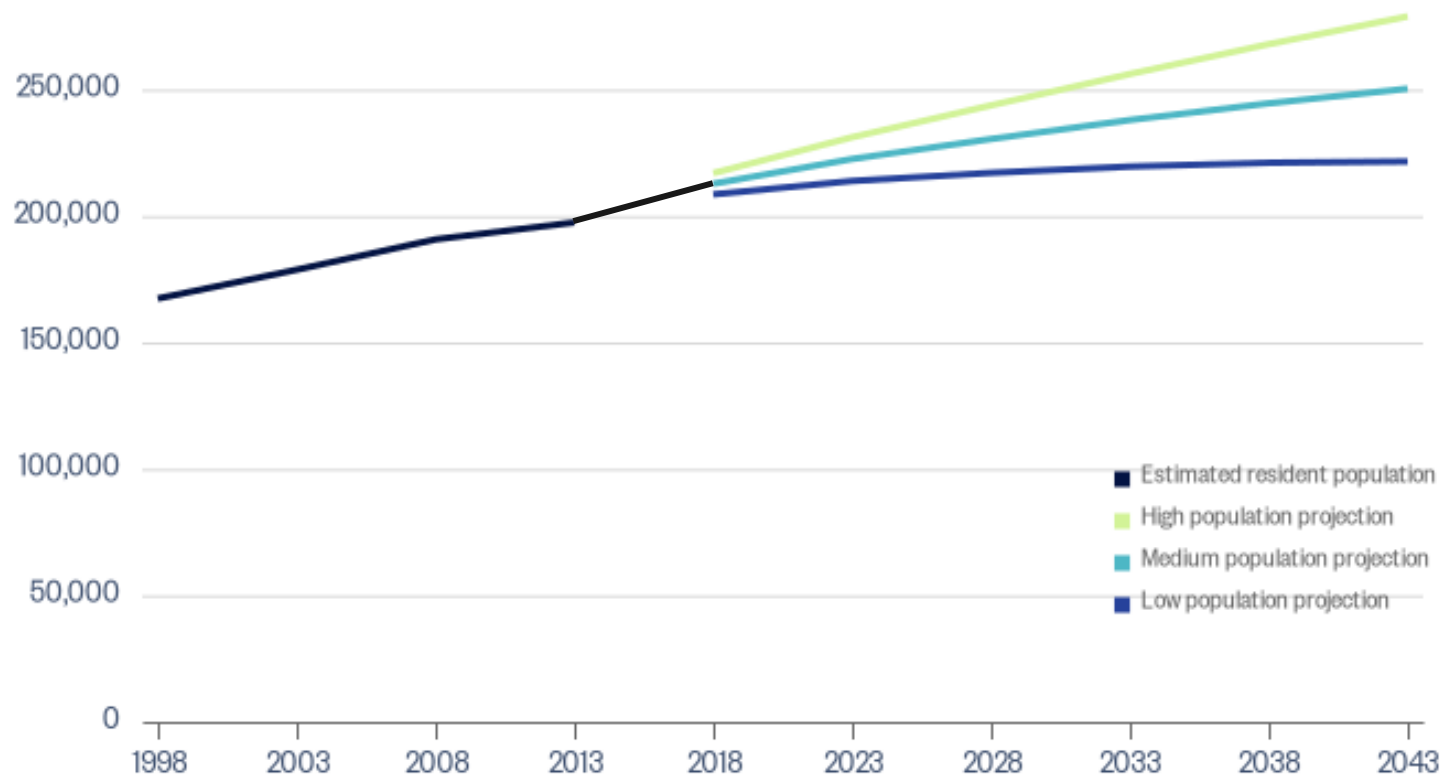
Shaping Wellingtons Future with FME

Henry Carthew
Senior GIS Specialist, Beca

Population estimates and projections for Wellington City, New Zealand

Year ended June 1998–2043, number of people

Provider: Stats NZ









Public
Transport
Accessibility

Impact on
Greenspaces

Earthquake
Risk



Greenfields



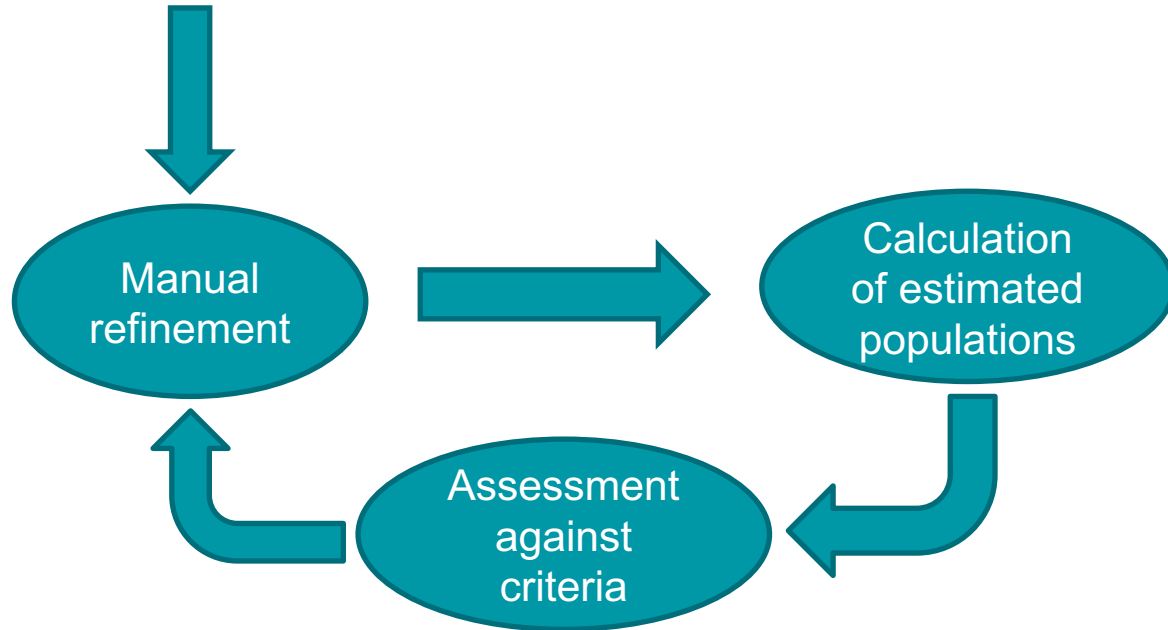
Suburban Centres



City Centre



Initial Scenario Development





Refined Growth Scenarios



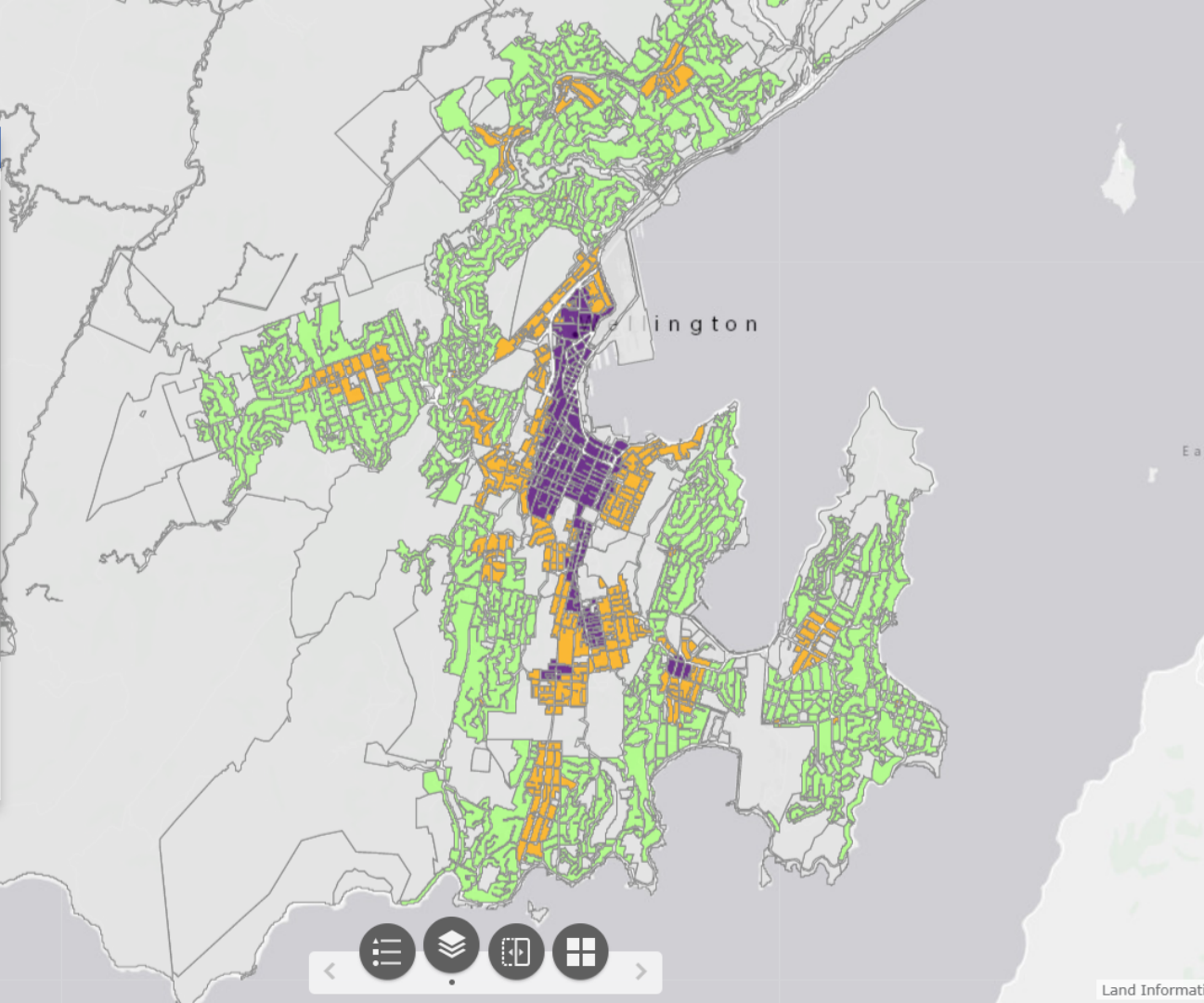
Layer List

Operational layers

- Designations ...
- Suburb Boundaries (WCC) ...
- Existing Suburb Densities ...
- Geographic Areas (ForecastID) ...
- Refined Scenario 1 ...
- Refined Scenario 2 ...
- Refined Scenario 3A ...

Legend for Refined Scenario 2:

- Low Density
- Medium Density
- High Density
- Other



1,735,693.086 5,432,198.994 Meters

2km





Greenfields



Suburban Centres



City Centre



Accessibility



Cost



Environmental
Impact



Hazard
Risk



Heritage
impact

Assessment Against Criteria

The screenshot displays the Bentley ProjectWise interface with a custom transformer workflow. The main window is titled "Custom Transformer" and features a logo of a stylized orange bird or wing. The workflow is divided into three panels:

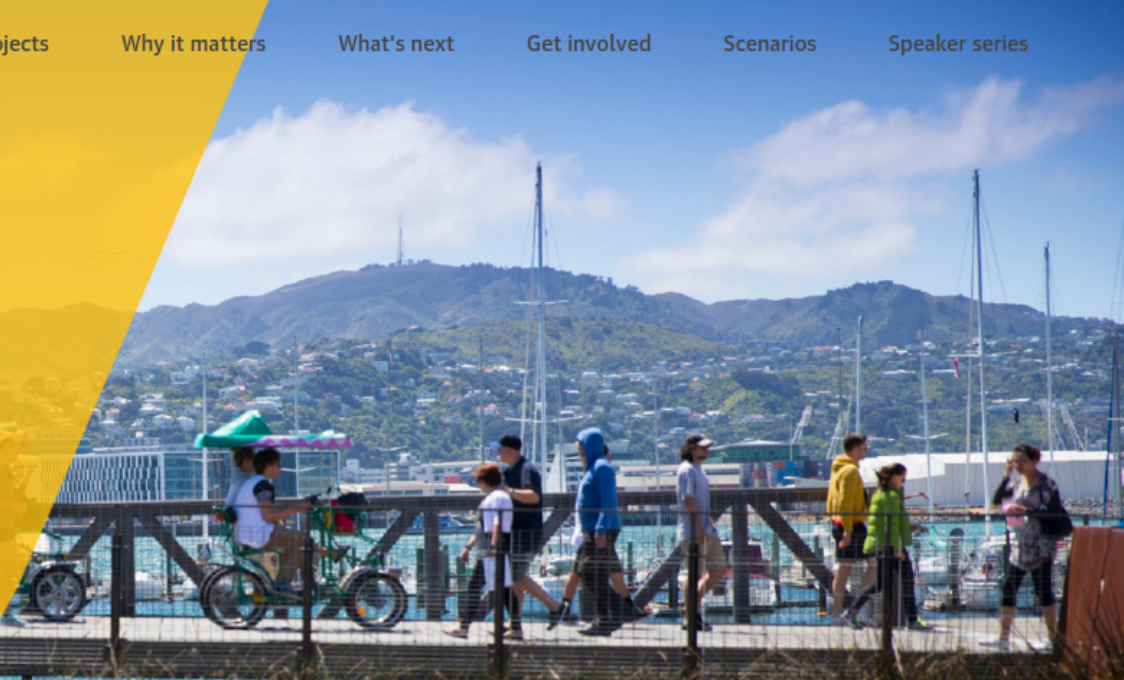
- Top Panel (V2.2 Prop within Central area):** Shows a sequence of steps: "ProposedProportionCalc" (with sub-steps "Scenario 20k Proportion", "Data Area", and "All Other Scenario Inputs") leading to "ScenarioCalculator", then "ProposedProportion", and finally "Results_2_1_CentralProp".
- Middle Panel (V2.2 Prop within working of P1):** A complex flowchart starting with "Plan section on slope" and "Plan for high frequency calls". It includes steps like "Result_2", "ScenarioCalculator_2", "ProposedProportionCalc_2", "ScenarioCalculator_2", "ProposedProportion_2", and "Results_2_2_P1PlanPercent".
- Bottom Panel (V2.2 Prop within working of scenario):** Shows a similar sequence to the top panel: "ProposedProportionCalc_3", "ScenarioCalculator_3", "ProposedProportion_3", and "Results_2_3_WorkingDir".

On the left, the "Navigator" pane lists various project elements, including "READER: WCCScenarios [FILEGDB]", "WRITER: Stage2_OptionsEvaluation [G...]", and "Transformers (30)". The "Transformer Gallery" at the bottom left shows "All (493)" transformers, with "Embedded Transformers (1)" and "FME Hub" also visible.

[Projects](#)[Why it matters](#)[What's next](#)[Get involved](#)[Scenarios](#)[Speaker series](#)

Our City
Tomorrow

Planning for Growth

[Scenarios](#)[Why it matters](#)[Get involved](#)

Absolutely Positively
Wellington City Council

Me Heke Ki Pōneke



Outcomes

- Highly adaptable
- Visual outputs
- Happy client



Thanks!



Henry Carthew
Senior GIS Specialist, Beca