

FREE
WEBINAR



BEYOND GIS: FME SOLUTIONS FOR LOCAL GOVERNMENT



LOCUS

Manage your data with Locus
and Safe Software's FME®



AGENDA

- Introducing FME Desktop & FME Server
- Common LGA Enterprise Integration Use Cases
- FME: Enterprise Service Bus
- Local Government Subscription Pricing
- Q&A – Open Session
- Additional Resources



LOCUS

Manage your data with Locus
and Safe Software's FME®



MEET LOCUS



John Arnerich
Group Director



Ruby Donaldson
Business
Development
Director



Darren Fergus
Senior
Technical
Consultant

Safe Software Platinum Partner &
Value Added Reseller
Australia – New Zealand



LOCUS
Manage your data with Locus
and Safe Software's FME®



- **10 Years** on the FME journey solving data challenges
- **350+ Organisations** trusting us in New Zealand, Australia and worldwide

- **9+ experts** with FME Technical Certifications
FME Certified Professional, FME Certified Server,
FME Certified Trainer
(professional certifications awarded by Safe Software)

LOCUS

Australia + New Zealand

WHY WORK WITH LOCUS?

- Safe Software Partner and Platinum Value-Added Reseller of FME
- A team of business practitioners together with superior technical expertise delivering measurable value that will save your business time, and money
- Customised data integration solutions, certified FME training, support and maintenance packages



LOCUS

Manage your data with Locus
and Safe Software's FME®



Some industry customers that use FME



LOCUS
Manage your data with Locus
and Safe Software's FME®



**Transport
for NSW**



Queensland Government
Department of Main Roads

**Christchurch
City Council**



**Land Information
New Zealand**
Toitū te whenua



**Wellington
Water**



**Department of
Conservation**
Te Papa Atawhai



**New Zealand
POLICE**
Ngā Pirihimana o Aotearoa



New Zealand Post



Data Integration Use Cases for Local Government

THE FME[®] PLATFORM

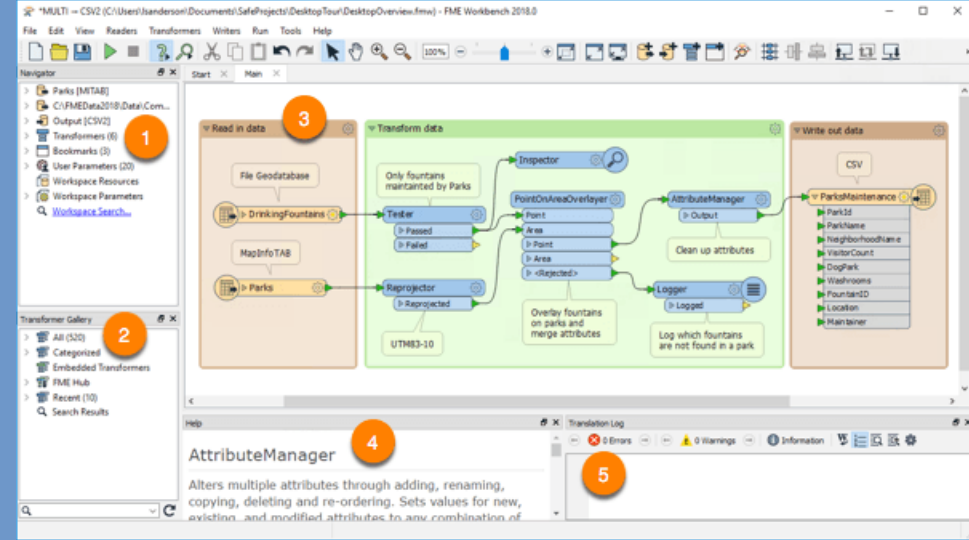


LOCUS
Manage your data with Locus
and Safe Software's FME[®]



FME Desktop

- A spatially enabled ETL (Extract, Transform, Load) tool that is capable of reading/writing over 450+ different datatypes/formats.
- FME Desktop provides the authoring tools in the form of Workspace/s, these provide the required functionality for any integration.
- The FME Workspace hosts a range of different “Transformers” and “Web Connections” that enable FME Desktop to provide integration and data transformation functionality.
- FME Workbench is the ‘author’ and ‘publishes’ to the FME server tool that is built into FME Desktop.
- Take a tour of FME Desktop - <https://www.safe.com/fme/fme-desktop/tour/2019.0>



FME Server

- Enterprise Level Solution, either:
 - On Premise**
 - Virtualisation** - Azure, AWS etc.
 - FME Cloud, SAAS** (Safe Software)
- Provides the necessary Job Scheduling, Job Management, Notifications, Repository Management, Load Balancing, Engine Management, Data Streaming etc. for those Workspaces that have been published to FME Server.
- Make data more accessible; create self-serve data portals such as plan submissions that anyone, with or without a license, can access.
- FME Server Apps that anyone can access. Create and share your projects across the web and maintain consistency across data sets with application integration.
- Highly scalable, fault tolerant and flexible deployment options.

