

FME Desktop Floating License Installation Instructions

Installing a Floating License on Windows

To install a floating license on Windows, follow these steps:

1. Before You Begin

Ensure that the following requirements are met before beginning the installation:

- You must be running a TCP/IP network.
- One computer on the network is designated as the license server. The license server may be any computer on the network that is visible to all computers that are dependent on it for their licenses. You should choose a computer that is always running and always connected to the network because the client computers must be able to communicate with the license server to use the FME. The processing burden on the licensing server is negligible.
- You must have Administrator privileges to install the FME Floating License server.
- If the computer you want to use as your floating license server has a firewall, you must open a port through which the FlexServer can communicate. By default, the range of ports used is 27000-27009, although you can also configure other ports. For more information, see [Specifying Floating License Server Ports](#).
- If FlexNet is already installed on your license server, you still need to perform a new installation. FME requires the version of FlexNet that is included in the installer. In addition, if your organization is configuring license borrowing (see [Borrowing a Floating License](#)), you will require LMTOOLS version 11.8 or newer.

The FME license server cannot be installed on a virtual machine that is built and moved around among many physical machines. It must be locked to a single fixed MAC address.

2. Download and Run the Installer

The FME installer contains the utility program required to get the license server up and running:

- fme-flexnet-win-x86.msi (Windows 32-bit)....**OR**
- fme-flexnet-win-x64.msi (Windows 64-bit)

You can download the installer from Safe Software's site:

<http://www.safe.com/support/support-resources/fme-downloads/>

On the computer that acts as the license server, run (double-click) the installer to create a FlexServer directory.

The following table lists the shortcuts that are created in the Safe Software program group.

Shortcut	Description
Generate hostid.txt	Creates a text file that contains the hostname and Host ID information required when requesting a floating license from www.safe.com/activation/floating/ .
Launch LMTOOLS	Launches LMTOOLS. Used for debugging or changing configuration.
License Administration Guide	Opens Flexera Software's License Administration Guide.
Start - Restart FME License Server	Starts the license manager process.
View FME License Server Log	Opens the license manager log file. Used for debugging.
View hostid.txt	Reopens text file, if required by Safe Software.
View Readme	Opens the installation and configuration instructions.

3. Request and Install the License

Perform the following steps on the computer that acts as the license server:

1. Click Start > Programs > FlexNet for Safe Software > View hostid.txt to open the hostid.txt file.

If you are installing FlexNet on Windows Vista, Windows 7, or Windows 8 and User Account Control (UAC) is enabled, right-click *Start-Restart FME License Server* and run this function using administrator privileges. If UAC is not enabled, you do not have to perform this step.

2. Send your hostid.txt file ruby.donaldson@locusglobal.com.au to request a license file.
3. You will receive an email with instructions for installing the license:
 - Save the safe.lic file to the FlexServer directory. For example: C:\Program Files\FlexServer\
 - Restart the FME License Server:

Start Menu > Programs > FlexNet for Safe Software > Start - Restart FME License Server

4. Install FME on Client Computers

After the license server is running, install FME on the client computers or on the Network Server (if you have a fast and non-congested network).

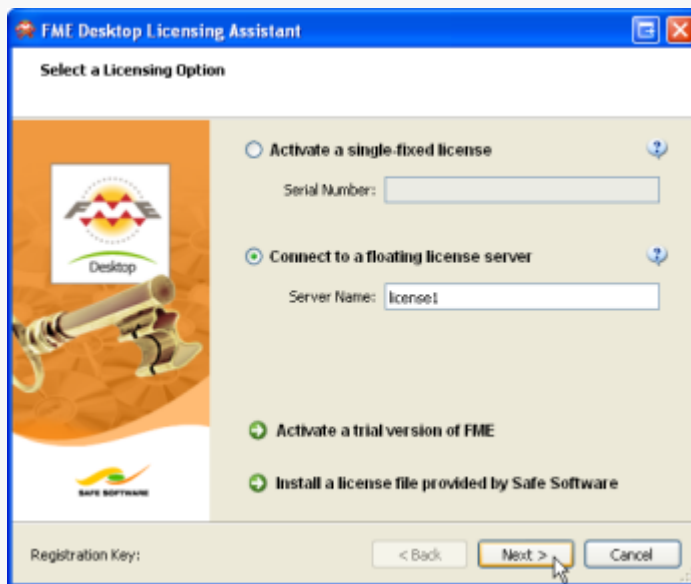
If this is a license upgrade from fixed license to floating license (and not a new FME installation), then ensure that there are no existing fme_license.dat files in the licenses directory; for example, check C:\Program Files\FME\licenses and C:\Users\<username>\Documents\FME\Licenses. Also ensure there are no FME tasks running before starting the registration process.

5. Start FME Registration

Perform this step for each computer that has FME installed.

For command prompt instructions, see [Licensing FME Desktop from the Windows Command Prompt](#).

1. Open the FME Licensing Assistant: Start > Programs > FME Desktop > Utilities > FME Licensing Assistant.



2. Select *Connect to a floating license server* and enter the name of the computer that is hosting the FME licenses.
3. Click the Next button.
4. If your configuration contains more than one type of FME license, select the license that you want to use.
5. Click Finish to complete the connection.